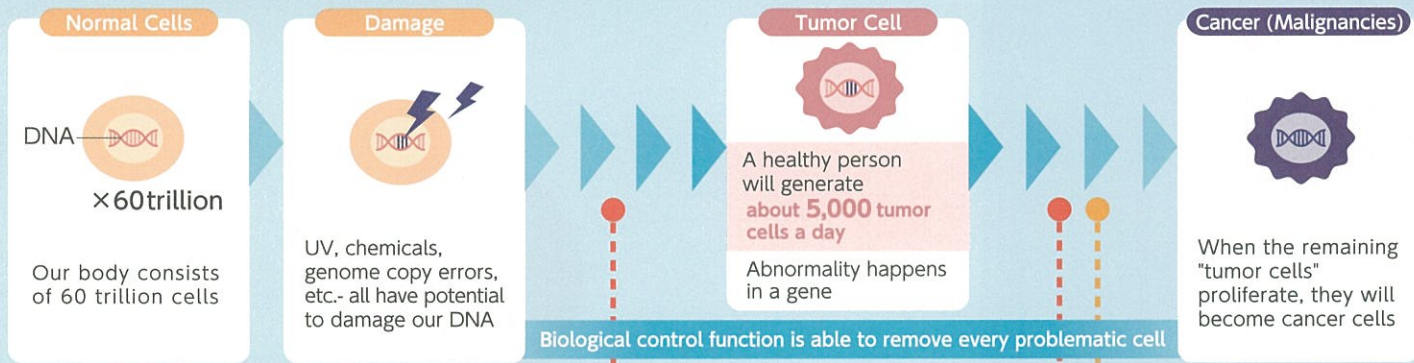
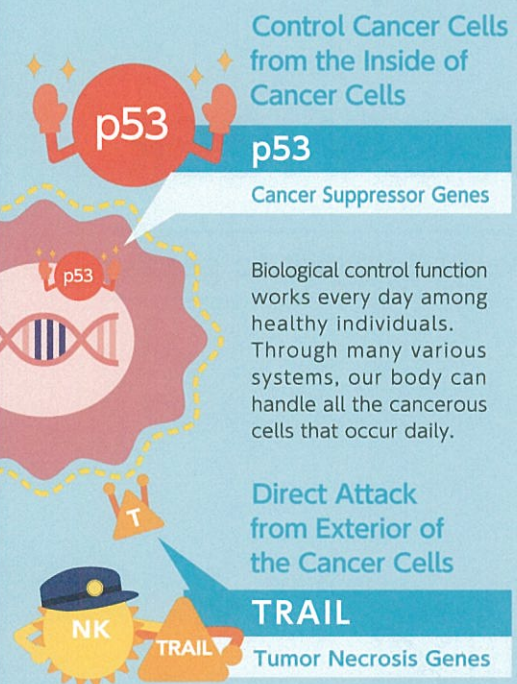


THE FORMATION OF CANCER

HOW TO BECOME A CANCER



FIGHT THE CANCER



Repair Damages

Repair DNA damages and prevent the development of cancer cells.

Control Growth

Promote apoptosis (self-mortification) and prevent the growth of cancer cells.

Direct Attack

NK (natural killer) cells release TRAIL and induce apoptosis only cancer cells.

CHECK

It is said that many cancer patients lose the function of p53.

CHECK

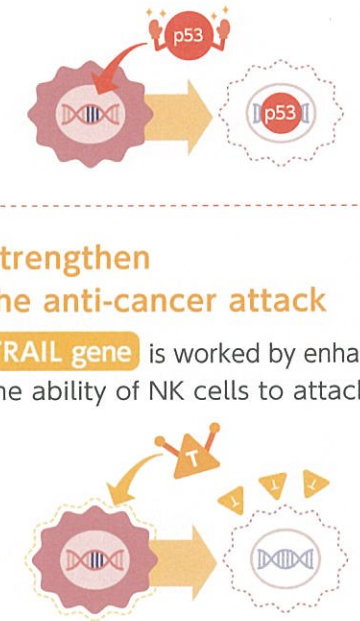
NK efficacy has been reduced in many cancer patients.

CHECK If p53 is damaged... If the immune system is disturbed... **There may Risk of Cancer**

ABOUT PREVENTION

How to Prevent Cancer

- 1 Replenish the cancer suppressor gene**
p53 gene is worked by control abnormal cells
- 2 Strengthen the anti-cancer attack**
TRAIL gene is worked by enhance the ability of NK cells to attack



How to Administer Prophylactic Genes

Genetic materials are carried by "liposomes" made from component parts of cell membrane. By applying intravenous drip for about 30 minutes, the genetic materials are delivered to the pre-designated locations within the body, whereupon they accumulate and perform their functions in the presence of cancer cells.

